

LED TAPE LIGHT Extrusions

These are designed to house and protect LED strip lights, enhancing durability and providing a sleek, professional finish. They also help to diffuse light evenly, preventing hotspots and creating a more aesthetically pleasing lighting effect..

LV-ALP2208

Surface mount aluminum extrusion and frosted PC cover



Product Codes

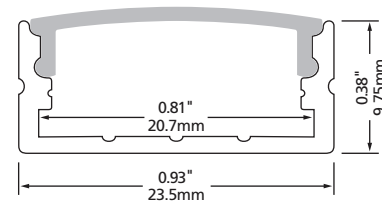
LV-ALP2208
LV-ALP2208-2M

End Caps

LV-ALP2208-EC (2/bag)
LV-ALP2208-EC-WF (2/bag)

Mounting Clips

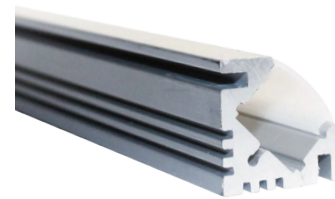
LV-ALP2208-MC (2/bag)



NOTE: Available in 1m (39") and 2m (78") lengths.

LV-LB-V3-FR

Corner surface mounted aluminum extrusion and frosted PC cover



Product Code

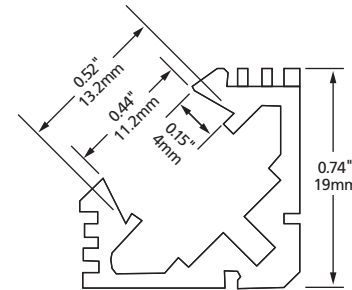
LV-LB-V3-FR

End Caps

LV-V1/V3-EC (2/bag)
LV-V1/V3-EC-WF (2/bag)

Mounting Clips

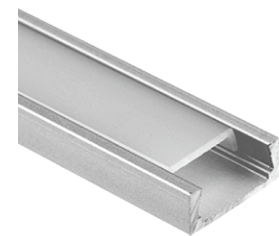
LV-V1/V3-MC (6/bag)



NOTE: Available in 1m (39").

LV-ALP007

Surface mount aluminum extrusion and frosted PC cover



Product Codes

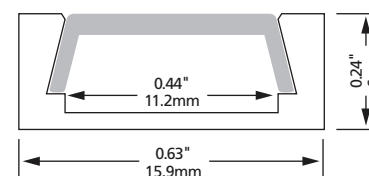
LV-ALP2207
LV-ALP2207-2M

End Caps

LV-ALP007-EC (2/bag)
LV-ALP007-EC-WF (2/bag)

Mounting Clips

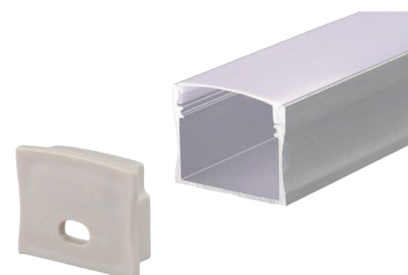
LV-ALP007-MC (6/bag)



NOTE: Available in 1m (39") and 2m (78") lengths.

LV-RD54

Surface mount aluminum extrusion



Product Codes

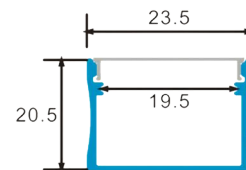
LV-RD54-1M
LV-RD54-2M

End Caps

LV-RD54/55-EC (2/bag)
LV-RD54/55-EC-WF (2/bag)

Mounting Clips

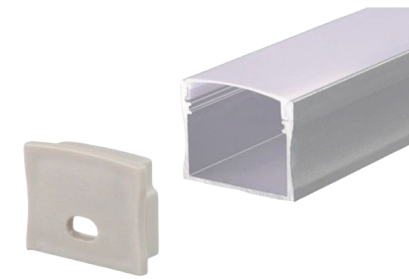
LV-RD54/55-EC-MC (6/bag)



NOTE: Available in 1m (39") and 2m (78") lengths.

LV-RD55

Surface mount aluminum extrusion



Product Codes

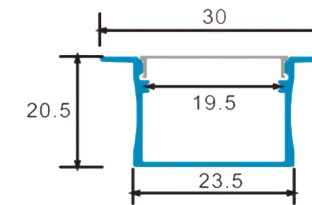
LV-RD55-1M
LV-RD55-2M

End Caps

LV-RD54/55-EC (2/bag)
LV-RD54/55-EC-WF (2/bag)

Mounting Clips

LV-RD54/55-EC-MC (6/bag)



NOTE: Available in 1m (39") and 2m (78") lengths.

LV-ALP2908

Recessed aluminum extrusion and frosted PC cover



Product Codes

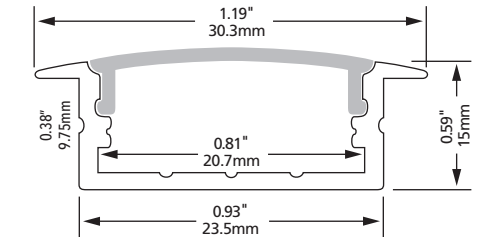
LV-ALP2908
LV-ALP2908-2M

End Caps

LV-ALP2908-EC (2/bag)
LV-ALP2908-EC-WF (2/bag)

Mounting Clips

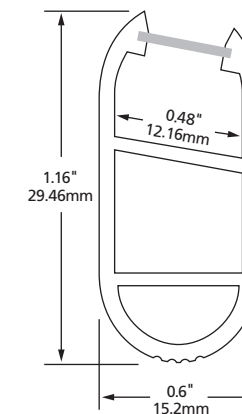
LV-ALP2908-MC (2/bag)



NOTE: Available in 1M (39") and 2M (78") lengths.

LV-1401

Closet aluminum extrusion with mounting brackets and frosted PC cover



NOTE: 1M (39") extrusion ships complete with two mounting end caps and one support