

# Low Voltage Wall Mount Touch CCT Controller

MODEL: LT-031-W

## Summary

The Low Voltage Wall Mount Touch CCT (Correlated Color Temperature) Controller features both color temperature and brightness adjustment functions for dual color LEDs (warm white and cool white). It combines the simplicity to use with the convenience of wall mounting and easy installation.

## Technical Parameters

- Working temperature: -20-60°
- Supply voltage: 12V/24V DC
- Output voltage: 12V/24V DC
- Output: 2 channels
- Connection mode: common anode
- External dimension: L2 $\frac{7}{8}$ " X W4 $\frac{3}{4}$ " X H1 $\frac{5}{8}$ "
- Packing size: L5 $\frac{7}{8}$ " X W4" X H2 $\frac{1}{4}$ "
- Net weight: 0.28lbs
- Gross weight: 0.42lbs
- Static power consumption: <1W
- Output current: <4A( each channel )
- Output power: 12V<96W,24V<192W



## Safety Instructions

1. Save these instructions.
2. Read all instructions thoroughly before commencing assembly or installation.
3. For indoor use only.
4. This product must be installed in accordance with the applicable installation code by a person familiar with the construction and operation of the product and the hazards involved.
5. Use only Class 2 non-dimmable power supplies.
6. Turn off all electrical power before modifying lighting system in any way.

**Interface Specifications**

Ports 1, 2, 3: output ports to connect LED lights (1-warm white, 2-cool white, 3- (+)12V/24V DC).

Ports 4, 5: Input 12V/24V DC.



**Front Panel Specifications**



Adjust color temperature.



Turn on/off LED light in any state.

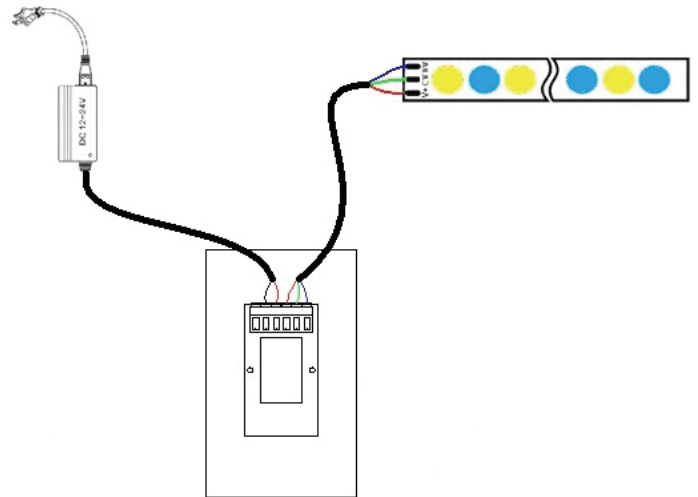


Reduce brightness.

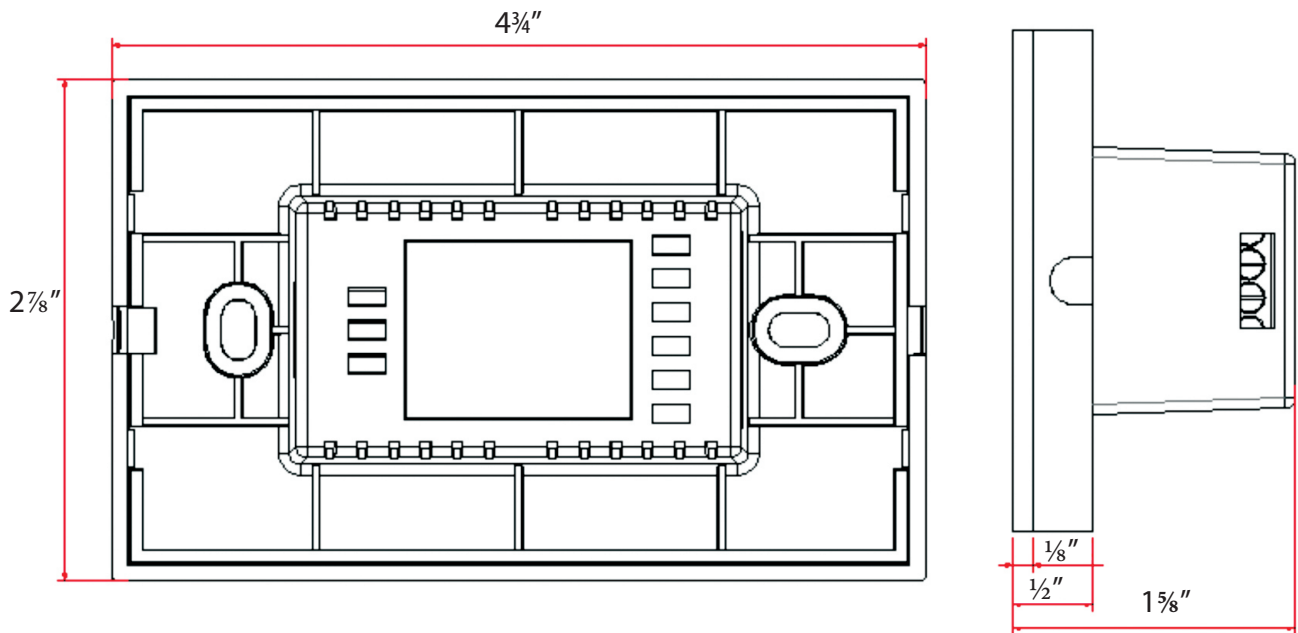


Increase brightness.

**Typical Application**



**External Dimensions**



**Installation**

**1. WIRING**

Connect wires (load side first) as follows:

Ports 1, 2, 3: output ports to connect LED lights (1-warm white, 2-cool white, 3- (+)12V/24V DC).

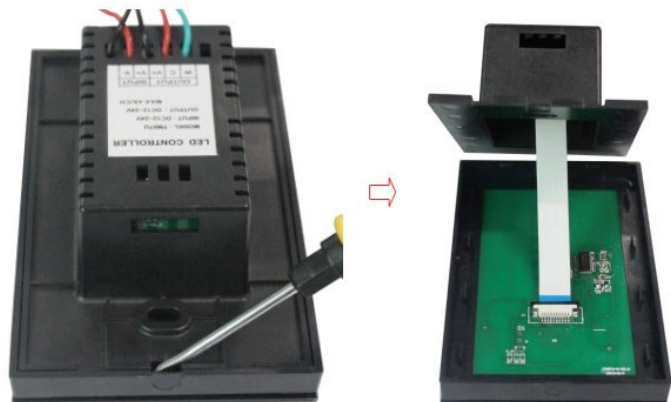
Ports 4, 5: Input 12V/24V DC.

Note: Use only Class 2, non-dimmable power supplies.



**2. OPEN THE PANEL**

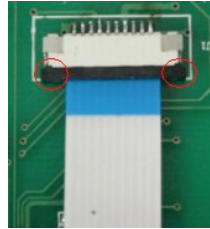
Using a flat screwdriver, gently pry open the panel back.



**3. INSTALL PANEL BASE**

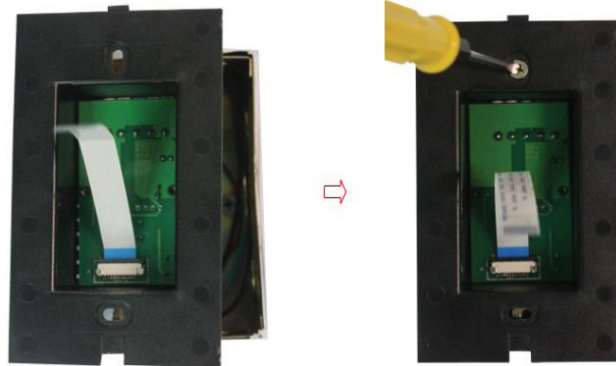
**Step 1:**

On the front panel, pull the edges of the black insert of the connector (marked with red circles), and remove the ribbon cable.



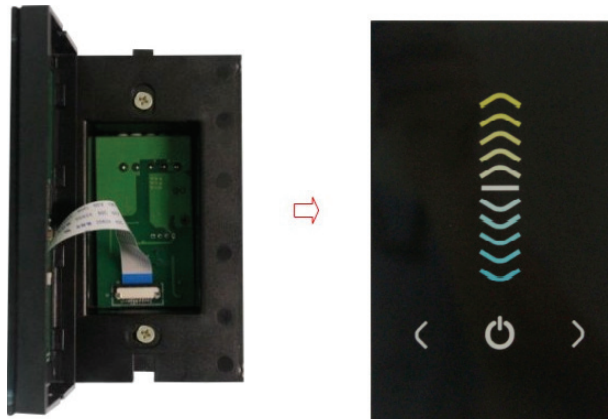
**Step 2:**

Mount the panel base into the 2X4 switch or utility box.



**4. MOUNT THE FRONT PANEL**

Re-connect the ribbon cable (blue side up), and mount the controller front panel.



**Notes**

1. Use only Class 2, non-dimmable 24V DC power supplies.
2. Please avoid short-circuits during installation.