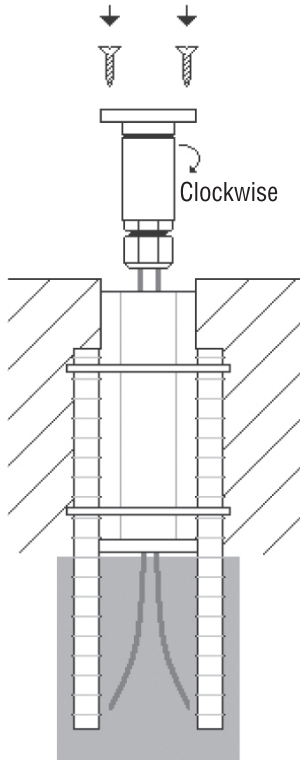


8. While pouring concrete, insure nothing moves concrete form. Minor adjustments while concrete is wet may be necessary to assure concrete form will be level with finished concrete surface.



9. After concrete is dry, remove top. It may be necessary to use a Roto Zip or similar tool to carefully cut around cover edge to dislodge any concrete that may prevent removal of top. Bring out wires and wire LED Disc as per fixture instructions. Place LED Disc into concrete form and GENTLY COIL WIRE CLOCKWISE to prevent barrel from loosening from the cover over time. Secure LED Disc into form with mounting screws. If there is a gap between the concrete and the LED Disc Light, a small bead of silicone sealant is recommended.

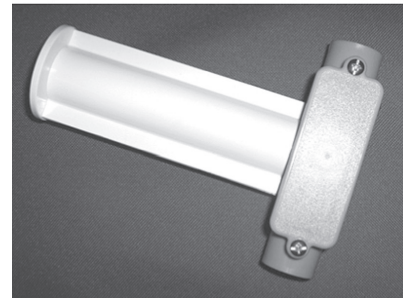
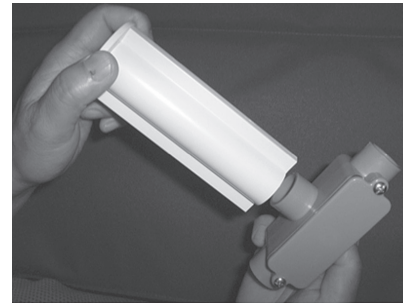
Note: Applying vaseline to the first 2" of each lead will ease wire insertion into waterproof strain relief.

USE OF "T" TYPE JUNCTION BOX WITH LEDD CONCRETE FORM

Note: If using conduit and "T" box for running cable to LED Disc Lights:

For your convenience, the concrete form is clearly marked "Fixture End" on one end of the form. The opposite end is designed to fit over standard 1/2" "T" type junction box allowing you to bring the cable through conduit, into the junction box and into the concrete form as described in these installation instructions. These T boxes are readily available at any electrical distributor.

Make sure the box you select fits the end of our concrete form. We suggest using silicone or glue to hold the concrete form in place to the junction box.



INSTALLATION AND
SAFETY INSTRUCTIONS

LEDD Concrete Form



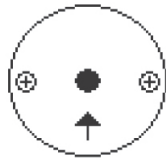
NSL
NATIONAL SPECIALTY LIGHTING
YOUR TRUSTED LIGHTING PARTNER
www.nslusa.com

NSL
NATIONAL SPECIALTY LIGHTING
YOUR TRUSTED LIGHTING PARTNER

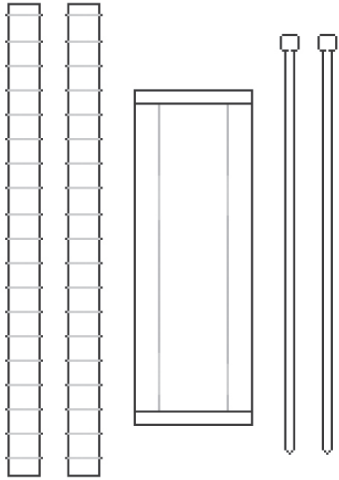

Intertek
4009842

GENERAL GUIDELINES FOR LEDD CONCRETE FORM USE

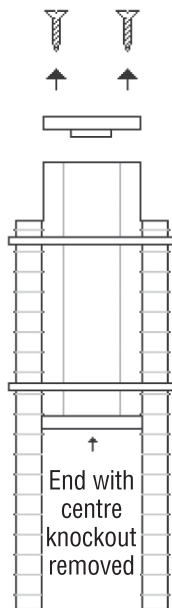
1. Remove the centre knockout from one end of the concrete form.



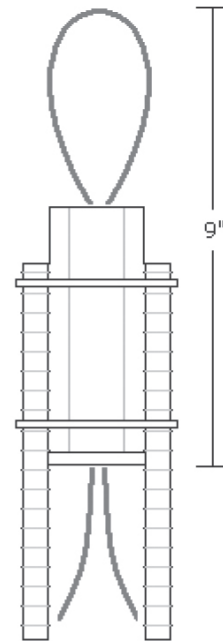
2. Using two sturdy tie-straps, secure two 10" lengths of rebar to each concrete form 1.5" below the top.



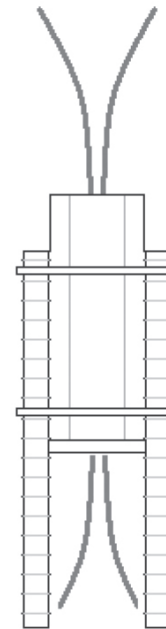
3. Using a phillips screwdriver, remove the top cover of concrete form.



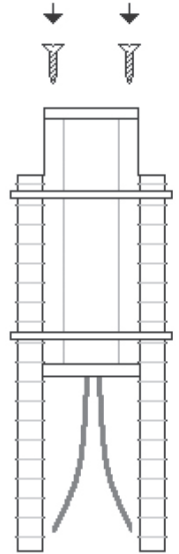
4. Through the bottom knockout, bring in a 9" loop of 18-2 solid conductor burial wire. NSL part #LW-18G-BUR. This is necessary to gang wire multiple fixtures.



5. Cut wire at center of loop and coil back into concrete form. The last concrete form in a gang wired run only needs one incoming wire.



6. Prior to replacing top cover, coat the complete top cover where exposed to concrete with a concrete non-stick solution.



7. Install concrete form and wire in sub-grade. Adjust concrete form so that it will be level with finished concrete level.

