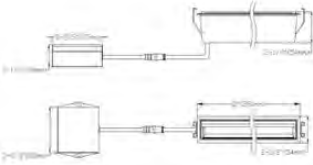
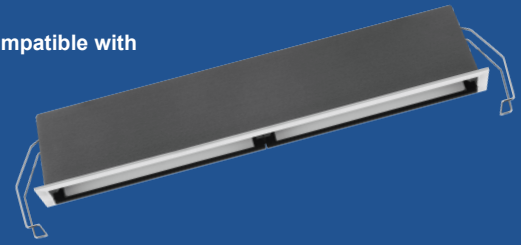


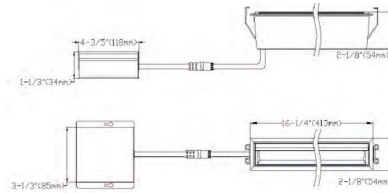
LED Regressed Downlight - Fixed

10 and 15 Light Wall Wash

- Durable Aluminum body.
- Simple snap-in installation is fast and easy
- I.C. rated for direct contact with insulation
- No housing required
- Input voltage: AC 120V 60Hz
- 100-10% dimming capability this fixture is compatible with industry standard TRIAC/ELV dimmers
- Rated for a long life - over 50,000 hours
- Suitable for DAMP LOCATION



Cut Out: 10 3/4" X 1 1/2"



Cut Out: 15 4/5" x 1 2/5"

SPECIFICATIONS	
Application	Recessed Ceiling Mount
Light Output(lm)	800lm
Watts	20W
Optional Driver Input	Triac Dimming
CRI	80
Color Temperature(k)	3000K-4000K
Input Volts & Frequency	120V 60Hz
Approved Location	Damp Location
Operating Temp.	(-4°F~104°F) -20~40°C
Beam Angle	30°

SPECIFICATIONS	
Application	Recessed Ceiling Mount
Light Output(lm)	1200lm
Watts	30w
Optional Driver Input	Triac Dimming
CRI	80
Color Temperature(k)	3000K-4000K
Input Volts & Frequency	120V 60Hz
Approved Location	Damp Location
Operating Temp.	(-4°F~104°F) -20~40°
Beam Angle	30°

Ordering

MODELS	CCT	FINISH
MR10WW-20W-3D-MWB	3000K	MWB Matte White with
MR10WW-20W-4D-MWB	4000K	
MR15WW-30W-3D-MWB	3000K	Matte Black Insert
MR15WW-30W-4D-MWB	4000K	

Accessories

Cover Plate

MR5WW-INSERT-MW
See Page 60

Mounting Plate

NR-7MULTI-NC
See Page 60

Mounting Plate

MR10-NC
See Page 60