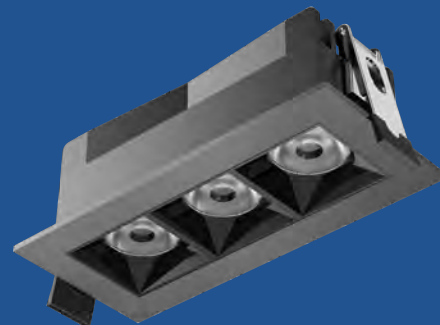


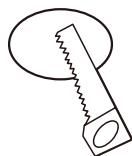
LED Regressed Downlight - Fixed

1 and 3 Light Mini Series

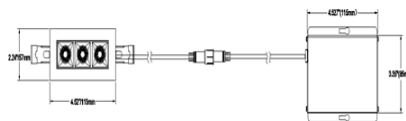
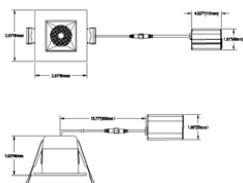
- Durable Aluminum body.
- Simple snap-in installation is fast and easy
- I.C. rated for direct contact with insulation
- No housing required
- Input voltage: AC 120V 60Hz
- 100-10% dimming capability this fixture is compatible with industry standard TRIAC/ELV dimmers
- Rated for a long life - over 50,000 hours
- Suitable for DAMP LOCATION



Cut Out: 2.04" X 1.85"



Cut Out: 4.13" X 1.53"



SPECIFICATIONS	
Application	Recessed Ceiling Mount
Light Output(lm)	400lm
Watts	4W
Optional Driver Input	Triac Dimming
CRI	90
Color Temperature(k)	3000K
Input Volts & Frequency	120V 60Hz
Approved Location	Damp Location
Operating Temp.	(-4°F~104°F) -20~40°C
Beam Angle	38°

SPECIFICATIONS	
Application	Recessed Ceiling Mount
Light Output(lm)	720lm
Watts	9W
Optional Driver Input	Triac Dimming
CRI	90
Color Temperature(k)	3000K
Input Volts & Frequency	120V 60Hz
Approved Location	Damp Location
Operating Temp.	(-4°F~104°F) -20~40°C
Beam Angle	38°

Ordering

	CCT	FINISH
NR1L-5W-3D90-38-GMW	3000K	GMW (Gun Metal-Matte White)
NR1L-5W-3D90-38-GMB		GMB (Gun Metal-Matte Black)
NR3L-9W-3D90-38-GMW	3000K	GMW (Gun Metal-Matte White)
NR3L-9W-3D90-38-GMB		GMB (Gun Metal-Matte Black)

Accessories

